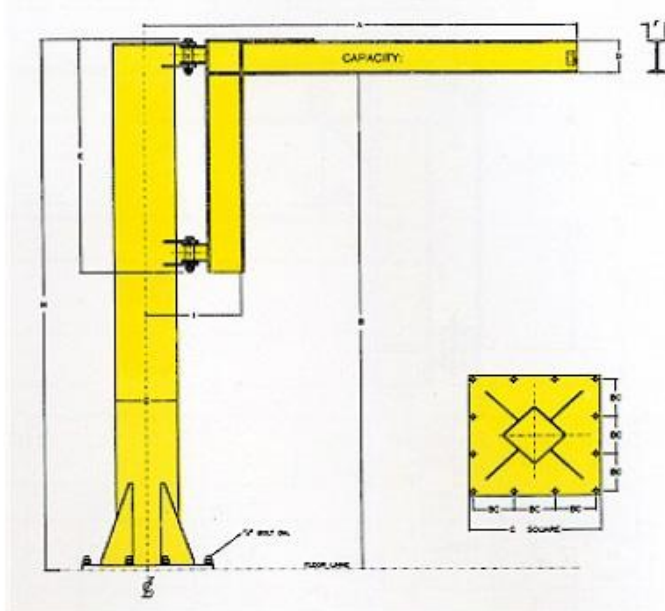


Free Standing Utility Jib



Pricing effective January 22, 2009
Free Standing Utility Jib Model UJC-270

270 Degree Rotation

Model	Span A	Under B	Capacity	C	D	E	F	G	H	I	Price
UJ500-08-08	8'	8'	1/4 Ton	7"	6"	42"	3.33"	40"	104"	16"	\$3,267
UJ500-08-10	10'	8'		7"	6"	42"	3.33"	42"	104"	16"	\$3,291
UJ500-08-12	12'	8'		7"	6"	42"	3.33"	44"	104"	16"	\$3,364
UJ500-08-14	14'	8'		7"	6"	42"	3.33"	48"	104"	16.5"	\$3,400
UJ500-10-08	8'	10'	1/4 Ton	8.5"	6"	42"	3.33"	40"	128"	16.5"	\$3,376
UJ500-10-10	10'	10'		8.5"	6"	42"	3.33"	42"	128"	16.5"	\$3,400
UJ500-10-12	12'	10'		8.5"	6"	42"	3.33"	44"	128"	16.5"	\$3,430
UJ500-10-14	14'	10'		8.5"	6"	42"	3.33"	48"	128"	16.5"	\$3,461
UJ500-12-08	8'	12'	1/4 Ton	8.5"	6"	42"	3.33"	40"	152"	16.5"	\$3,430
UJ500-12-10	10'	12'		8.5"	6"	42"	3.33"	42"	152"	16.5"	\$3,455
UJ500-12-12	12'	12'		8.5"	6"	42"	3.33"	44"	152"	16.5"	\$3,485
UJ500-12-14	14'	12'		8.5"	6"	42"	3.33"	48"	152"	16.5"	\$3,515
UJ1000-08-08	8'	8'	1/2 Ton	8.5"	8"	44"	4"	40"	106"	18.5"	\$3,352
UJ1000-08-10	10'	8'		8.5"	8"	44"	4"	42"	106"	18.5"	\$3,558
UJ1000-08-12	12'	8'		11.37"	8"	44"	4"	44"	106"	18.5"	\$3,721
UJ1000-08-14	14'	8'		11.37"	8"	44"	4"	48"	106"	18.5"	\$3,782
UJ1000-10-08	8'	10'	1/2 Ton	8.5"	8"	44"	4"	40"	130"	18.5"	\$3,412
UJ1000-10-10	10'	10'		8.5"	8"	44"	4"	42"	130"	18.5"	\$3,661
UJ1000-10-12	12'	10'		11.37"	8"	44"	4"	44"	130"	19.5"	\$3,836
UJ1000-10-14	14'	10'		11.37"	8"	56"	4"	48"	130"	19.5"	\$3,873
UJ1000-12-08	8'	12'	1/2 Ton	11.37"	8"	44"	4"	40"	154"	19.5"	\$3,897
UJ1000-12-10	10'	12'		11.37"	8"	44"	4"	42"	154"	19.5"	\$3,933
UJ1000-12-12	12'	12'		11.37"	8"	44"	4"	44"	154"	19.5"	\$3,964
UJ1000-12-14	14'	12'		11.37"	8"	56"	4"	48"	154"	19.5"	\$4,267
UJ2000-08-08	8'	8'	1 Ton	11.37"	8"	56"	4"	40"	106"	19.5"	\$3,352
UJ2000-08-10	10'	8'		14.12"	8"	68"	4"	42"	106"	20.5"	\$3,558
UJ2000-08-12	12'	8'		14.12"	8"	68"	4"	44"	106"	20.5"	\$3,721
UJ2000-08-14	14'	8'		14.12"	10"	70"	4"	48"	106"	22.5"	\$3,782

UJ2000-10-08	8'	10'	1 Ton	14.12"	8"	68"	4"	40"	130"	20.5"	\$3,412
UJ2000-10-10	10'	10'		14.12"	8"	68"	4"	42"	130"	20.5"	\$3,661
UJ2000-10-12	12'	10'		14.12"	10"	70"	4"	44"	130"	22.5"	\$3,836
UJ2000-10-14	14'	10'		14.12"	10"	70"	4"	48"	130"	22.5"	\$3,873
UJ2000-12-08	8'	12'	1 Ton	14.12"	8"	68"	4"	40"	154"	20.5"	\$3,897
UJ2000-12-10	10'	12'		14.12"	8"	68"	4"	42"	154"	20.5"	\$3,933
UJ2000-12-12	12'	12'		14.12"	10"	70"	4.6"	44"	154"	22.5"	\$3,964
UJ2000-12-14	14'	12'		14.12"	10"	70"	4.6"	48"	154"	22.5"	\$4,267

Dressor Crane & Hoist
 div of The Dressor Group Ltd
 400 Morobel Drive Unit # 3
 Milton, Ontario L9T-4N6
 Tel (905) 636-9100 or 1-800-418-1416
 Fax (905) 636-9200